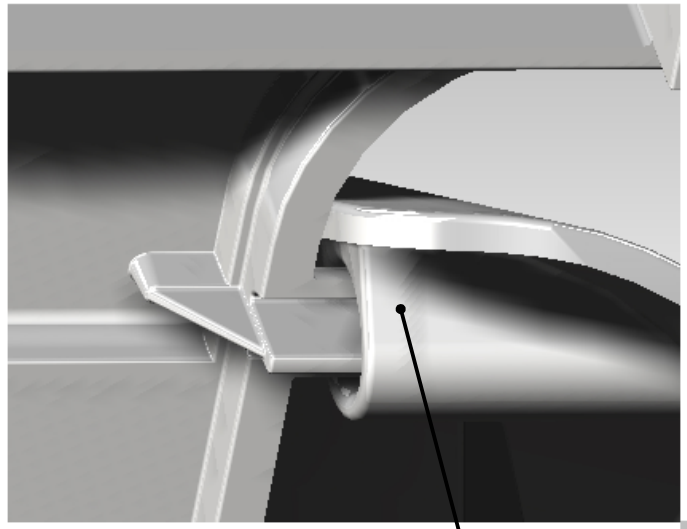
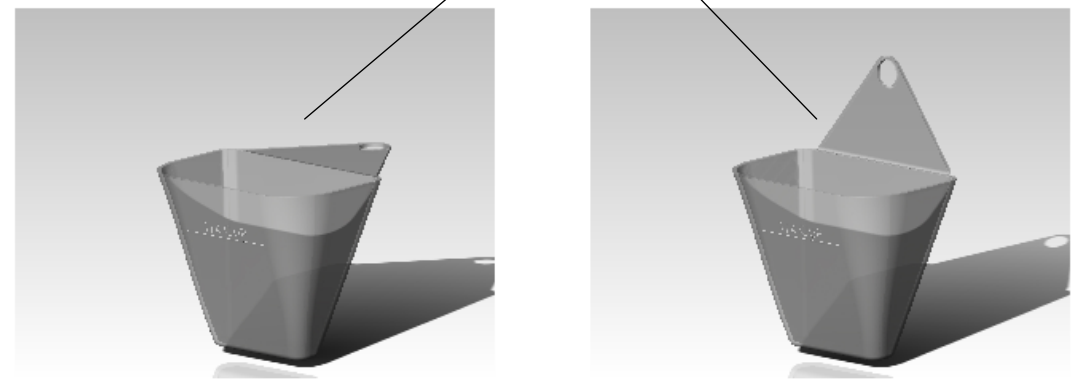


MATERIAL :
TREATMENT AND FINISH :

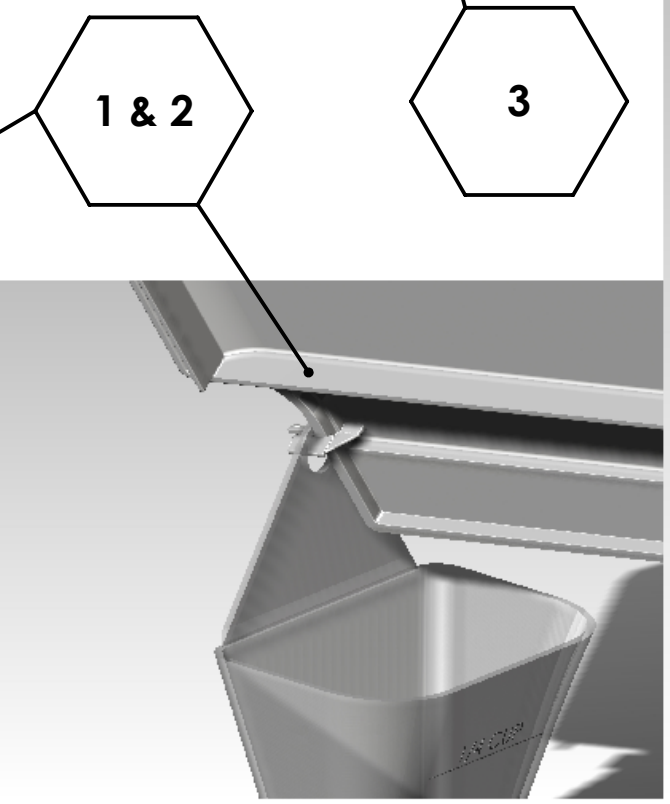
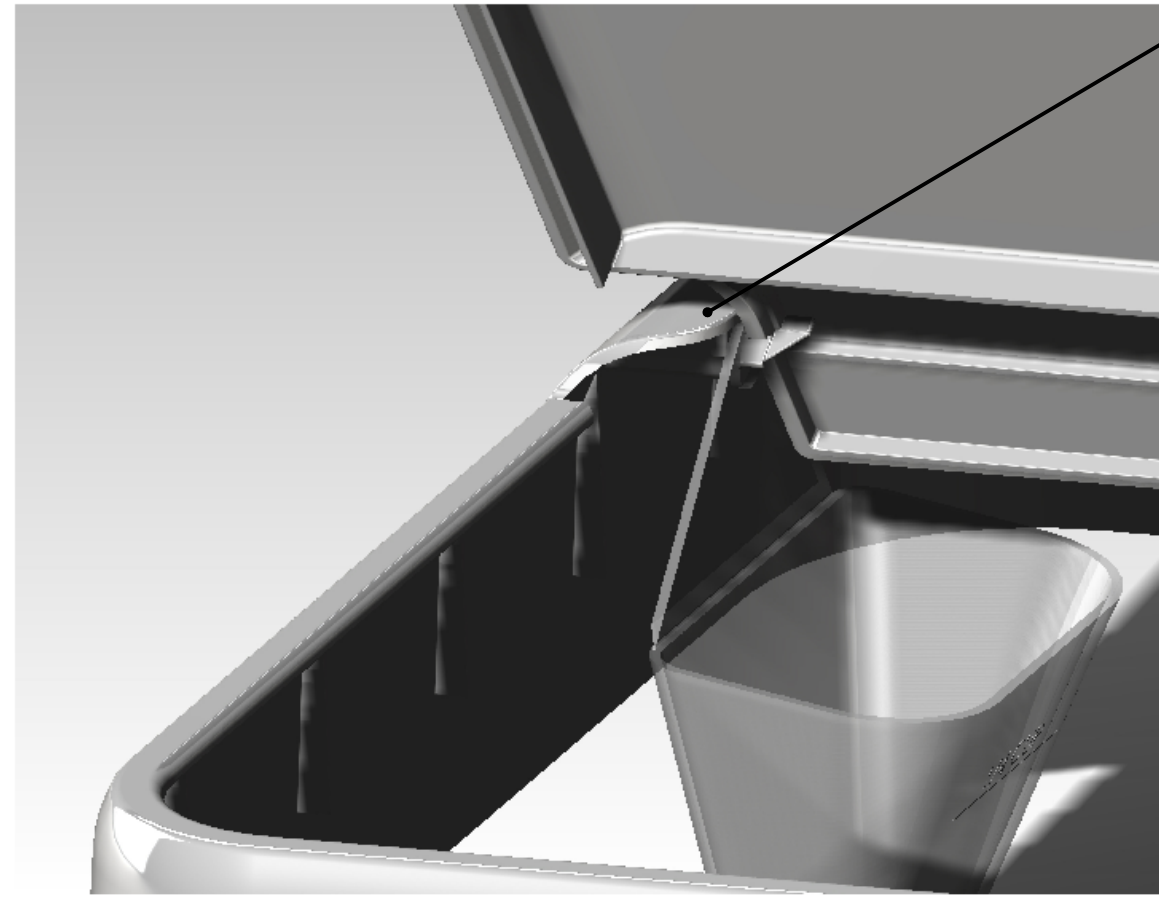
REVISIONS			
ZONE	REV.	DATE	APPROVED

FOLD HANGING TAB 90 DEGREES



- 1. SLIDE BASKET HANGING TAB OVER A LID HINGE POST**
- 2. INSERT LID HINGE POST INTO PIVOT HOLE IN THE COVER**
- 3. FLEX LID AND FIT OPPOSITE LID HINGE POST INTO THE OTHER PIVOT HOLE**

LID SHOULD CLOSE AND ROTATE FREELY WHILE ALLOWING THE BASKET TO REMAIN UPRIGHT. BASKET MAY BE USED TO CONTAIN SCENT ABSORBING PRODUCTS OR DISCS.



DIAPER PAIL ASSEMBLY INSTRUCTIONS

PROPRIETARY AND CONFIDENTIAL
 THE INFORMATION CONTAINED IN THIS DRAWING IS THE SOLE PROPERTY OF PMC GROUP / LENCO PMC. ANY REPRODUCTION IN PART OR AS A WHOLE WITHOUT THE WRITTEN PERMISSION OF LENCO-PMC IS PROHIBITED.

UNLESS OTHERWISE SPECIFIED:		NAME	DATE	PART NO :	PART NUMBER	
DIMENSIONS ARE IN INCHES		DRAWN	S. McGee	DATE	LENCO-PMC A PMC GROUP INC. COMPANY 10240 DEERPARK ROAD WAVERLY, NE 68462 402-786-2000	
TOLERANCES		CHECKED				
ANGULAR: MACH ± .1 BEND ±1		ENG APPR.				
FRACTIONAL : 1/16		MFG APPR.				
TWO PLACE DECIMAL : ±0.01		Q.A.			SIZE	DWG. NO.
THREE PLACE DECIMAL : ±0.005		COMMENTS:			B	Assembly Instructions
INTERPRET GEOMETRIC TOLERANCING PER:		WEIGHT:		SCALE:	REV	
MATERIAL					SHEET 1 OF 1	
FINISH						
NEXT ASSY	USED ON					
APPLICATION		DO NOT SCALE DRAWING				